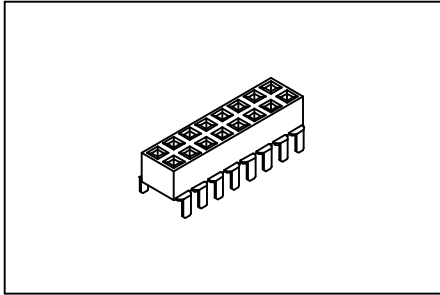


P.C.B. Socket 2.54mmX2.54mm(0.100"X0.100")

GXCON



Features:

- * Bottom Entry, Top Entry or Pass Through.
- * Low profile 5.0mm (0.197").
- * Two choices of foot print.

Material:

Housing: 30% Glass filled PBT UL94V-0.

Contacts: Phosphor Bronze.

Plating: Gold plated over nickel.

Tin plated over nickel.

Electrical Characteristics:

Current Rating: 1 AMP.

Insulator Resistance: 5000MΩmin. at DC 500V.

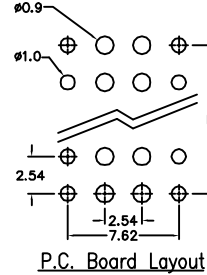
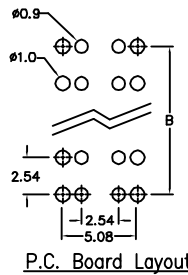
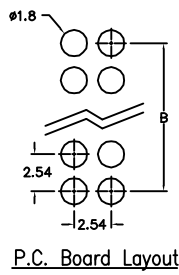
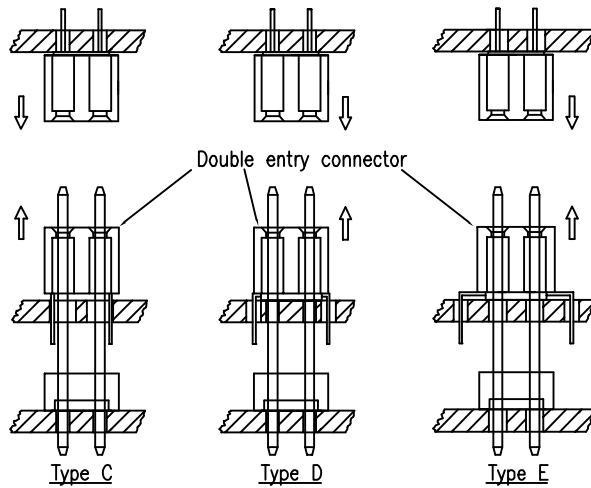
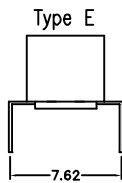
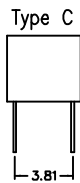
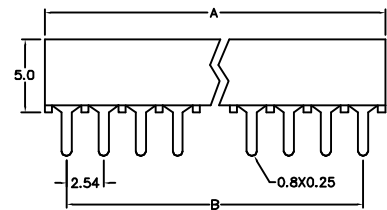
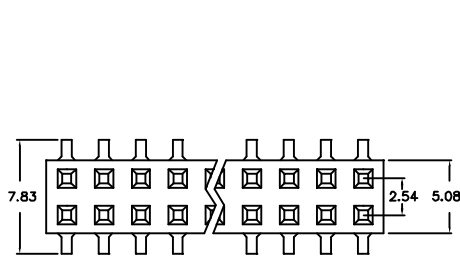
Contact Resistance: 20mΩmax. at DC 100mA.

Operating Temperature: -55°C ~ +105°C.

Mechanical Characteristics:

Insertion Force: 160g avg.(0.64mm sq. pin)

Withdrawal Force: 120g avg.(0.64mm sq. pin)



Position	6 Thru 80
Dimension	
A	2.54 X No. of Positions /2+0.8
B	2.54 X No. of Positions /2-2.54

Ordering information

PS09- 2 40 1 C
 Series Double Row No. of Pin Per Row 1: Gold Plated C: 2.54mm X 3.81mm
 2: Tin Plated D: 2.54mm X 5.08mm
 E: 2.54mm X 7.62mm